



## Fashions of the Ages Women's Measurement Form

**Before you begin please read the following:**

It is absolutely essential that you take careful measurements in order to ensure proper fit of your garment(s). **PLEASE DO NOT TAKE THESE MEASUREMENTS YOURSELF.** Ask a trusted friend or go to a local bridal or alterations shop. Fashions of the Ages is NOT responsible for garments that do not fit as a result of inaccurate measurements. All of our garments are drafted from scratch based on the designs of the historical period you have selected and your specific needs. *There are no refunds or exchanges of any kind, alterations will only be made if there is a mistake on our part. If you have any questions please email us before beginning, we are more than happy to help.*

- Measurements should be taken while wearing whatever undergarments you plan on wearing under your garment(s).
- To achieve the best fit do not take your measurements directly after eating. It is best to avoid eating for 2-3 hours before taking measurements.
- Tie a string snugly around the smallest part of your torso. This will help you when taking other measurements that are based off of your waistline.
- Try to be as natural as possible with regards to your posture when taking measurements; do not suck in your waist unless instructed to do so.
- Record measurements in ½ inch increments with the tape measure pulled snug.
- A paper tape measure is preferable, plastic measurers are also ok.

**NAME:** \_\_\_\_\_

**EMAIL ADDRESS:** \_\_\_\_\_

**HEIGHT:** While barefoot \_\_\_\_\_

**WEIGHT:** \_\_\_\_\_

**WERE THESE MEASUREMENTS TAKEN WHILE WEARING A CORSET?** \_\_\_\_\_

**DRESS SIZE:** \_\_\_\_\_

**SHOE SIZE:** \_\_\_\_\_

**HEAD CIRCUMFERENCE:** Around your head just above the ears with the tape pulled snug  
\_\_\_\_\_

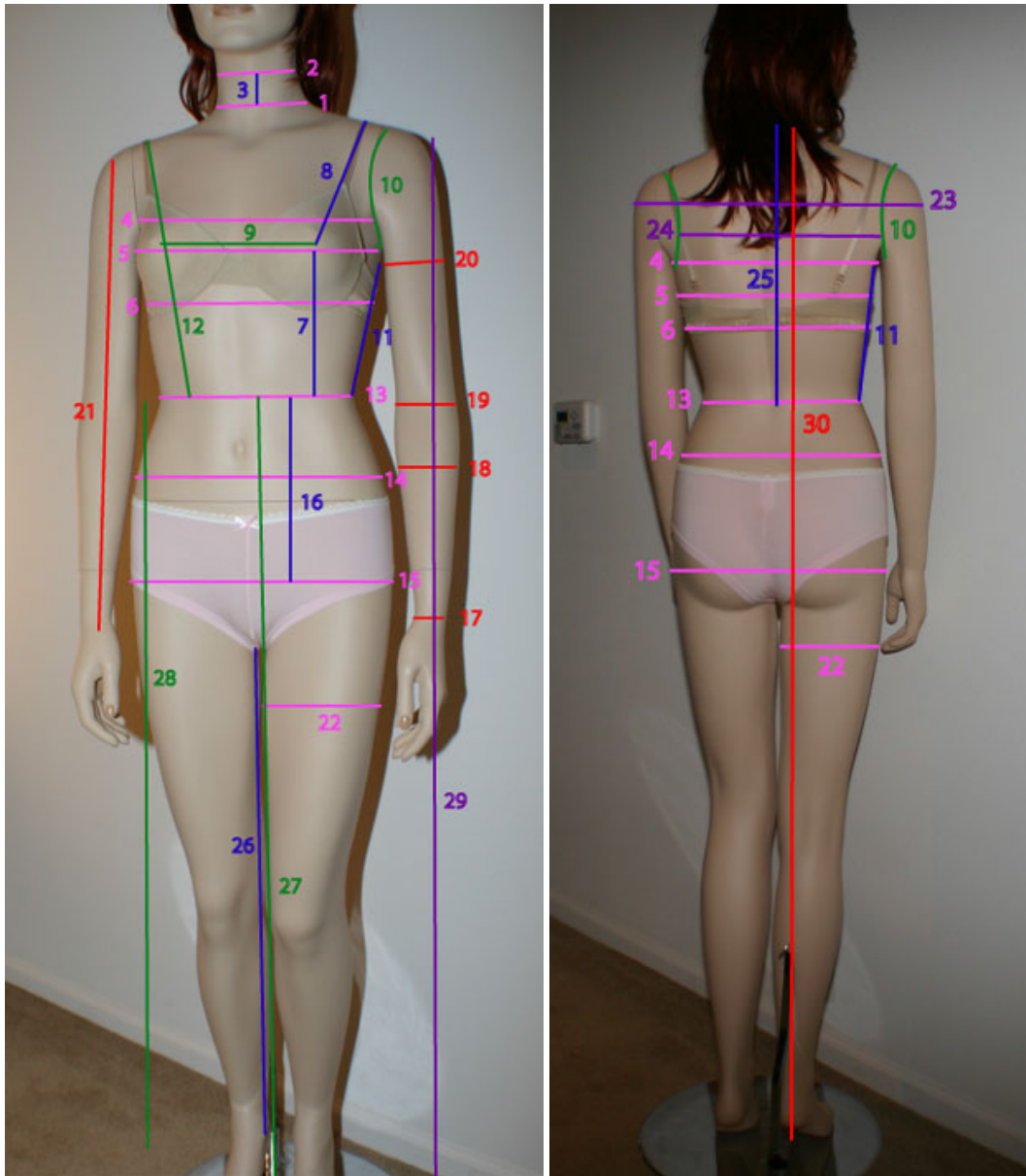
**1.) NECK CIRCUMFERENCE:** Around your neck at the base of your throat \_\_\_\_\_

**2.) UPPER NECK CIRCUMFERENCE:** Around your neck at the middle of the throat \_\_\_\_\_

**3.) NECK HEIGHT:** Distance between NECK and UPPER NECK measurements \_\_\_\_\_

**4.) HIGH BUST CIRCUMFERENCE:** Measure around your body above your bust \_\_\_\_\_

**5.) BUST CIRCUMFERENCE:** Measure around the fullest part of your bust \_\_\_\_\_



**FRONT BUST\*:** Measure from side to side around the fullest part \_\_\_\_\_

**BACK BUST\*:** Measure from side to side around the fullest part \_\_\_\_\_

\* Your front and back bust measurements should be taken around the fullest part of your bust (along the same line you've taken your bust measurement). However, instead of measuring all the way around your body the front bust measurement starts at your right side (under your armpit) and measures across your bust ending at your left side (under your armpit). Your back bust measurement is taken the same way, starting at your right side and measuring across your back to your left side, again along the same line that your bust measurement was taken on. A way to check and make sure you're measurements are correct is to add your front bust and back bust measurements together - they should equal your BUST (#5) measurement.

**BRA SIZE:** (including cup size please) \_\_\_\_\_

**6.) RIB CAGE CIRCUMFERENCE:** First, measure around your rib cage directly under breasts (make sure you are not holding your breath) \_\_\_\_\_ Second, take the same measurement while taking a deep breath so ribcage is fully expanded \_\_\_\_\_

**7.) BUST TO WAIST:** The distance from your nipple to your waist \_\_\_\_\_

- 8.) **BUST LENGTH:** From top of shoulder to nipple \_\_\_\_\_
- 9.) **BUST DISTANCE:** Measure the distance between nipples \_\_\_\_\_
- 10.) **UNDERARMS:** From top of shoulder around under armpit and back to top. Basically the size you want your sleeve hole to be \_\_\_\_\_
- 11.) **SIDE:** From 2 inches under your armpit crease (center of armpit) to waist \_\_\_\_\_
- 12.) **SHOULDER TO WAIST:** From top of shoulder over center of bust to waist \_\_\_\_\_
- 13.) **WAIST CIRCUMFERENCE:** Measure around body where the string is tied at the smallest part of your torso (typically 1 inch above the navel) \_\_\_\_\_
- 14.) **HIGH HIP CIRCUMFERENCE:** Measure around your hips 3 inches below waist \_\_\_\_\_
- 15.) **FULL HIP CIRCUMFERENCE:** Measure around the fullest part of your hips \_\_\_\_\_
- FRONT HIP\*:** From side to side around the fullest part \_\_\_\_\_
- BACK HIP\*:** From side to side around the fullest part \_\_\_\_\_

\*Front and Back hip measurements should be taken in the same way Front and Back bust measurements are taken. For more instructions please read note above.

- 16.) **WAIST TO FULL HIP:** The distance from waist to full hip \_\_\_\_\_

**For all arm measurements, measure both arms and please provide the measurements for the arm that is larger**

- 17.) **WRIST CIRCUMFERENCE:** Around your wrist at the wrist bone \_\_\_\_\_
- 18.) **FOREARM CIRCUMFERENCE:** Around your arm 2-3 inches below the elbow \_\_\_\_\_
- 19.) **ELBOW CIRCUMFERENCE:** Around your arm at the elbow (slightly bent) \_\_\_\_\_
- 20.) **BICEP CIRCUMFERENCE:** Around your arm at the fullest part \_\_\_\_\_
- 21.) **ARM LENGTH STRAIT:** From shoulder to wrist with arm strait \_\_\_\_\_
- ARM LENGTH BENT:** From shoulder to wrist with arm bent at 45 degree angle, follow the tape along your arm (should be longer than ARM LENGTH STRAIT measurement) \_\_\_\_\_
- 22.) **THIGH CIRCUMFERENCE:** Around the fullest part of your thigh \_\_\_\_\_
- 23.) **SHOULDER TO SHOULDER:** Across back from right arm socket to left arm socket \_\_\_\_\_
- 24.) **BACK ARMHOLE TO ARMHOLE:** Across back from right arm hole to left arm hole \_\_\_\_\_
- 25.) **CENTER BACK:** From base of neck to waist \_\_\_\_\_
- 26.) **INSEAM:** From crotch to floor in planned shoes \_\_\_\_\_
- 27.) **WAIST TO FLOOR:** From front (center) waist to floor while wearing planned shoes, WITHOUT hoops on \_\_\_\_\_
- WAIST TO FLOOR WITH HOOPS:** For garment that will be worn with hoop skirt only. Measure from front (center) waist to floor while wearing planned shoes, WITH hoops on \_\_\_\_\_
- 28.) **SIDE TO FLOOR:** From side waist to floor while wearing planned shoes, WITHOUT hoops on \_\_\_\_\_
- SIDE TO FLOOR WITH HOOPS:** For garment that will be worn with hoop skirt only. Measure from side waist to floor while wearing planned shoes WITH hoops on \_\_\_\_\_

**BUSTLE BACK:** For bustle gowns only. Measure from back (center) waist to floor over bustle in planned shoes \_\_\_\_\_

**29.) SHOULDER TO FLOOR:** From side of shoulder (along the side of the body) to the floor in planned shoes \_\_\_\_\_

**30.) NECK TO FLOOR:** From the base of neck (back) vertically to the floor in planned shoes, NOT following your body contours \_\_\_\_\_

**COMMENTS/SPECIAL INSTRUCTIONS:**

---

---

---

---

---

**I HAVE READ AND AGREE TO FASHIONS OF THE AGES POLICIES** \_\_\_\_\_